



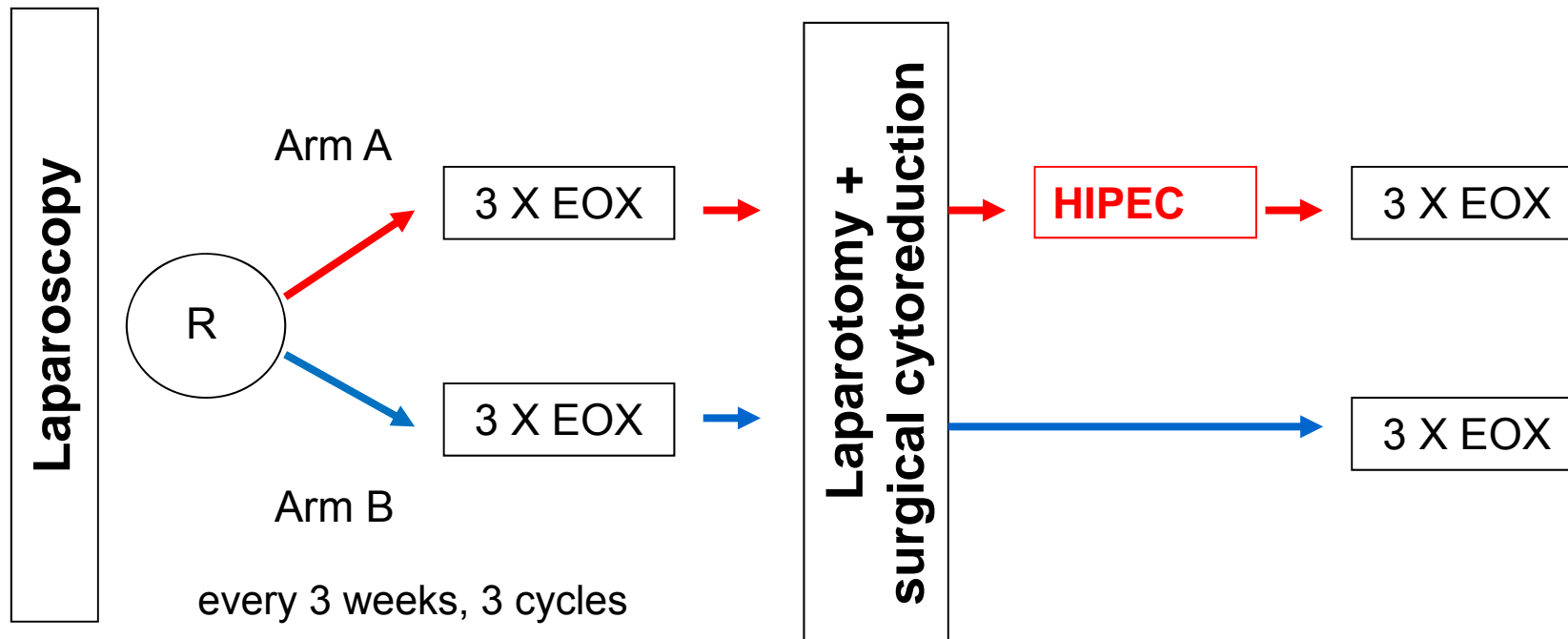
Peritoneal Carcinomatosis

Case Reports

B. Rau

Klinik für Allgemein-, Viszeral-, Gefäß-
und Thoraxchirurgie
Charité Campus Mitte
Klinikdirektor: Univ.-Prof. Dr. med. J. Pratschke

Participation in the GASTRIPEC Trial



HER 2 Status negativ:

Epirubicin 50 mg/m² i.v. d1; **Oxaliplatin** 130 mg/m² i.v. d1 ; **Capecitabin** 625 mg/m² p.o. d1-21

HER 2 Status positiv:

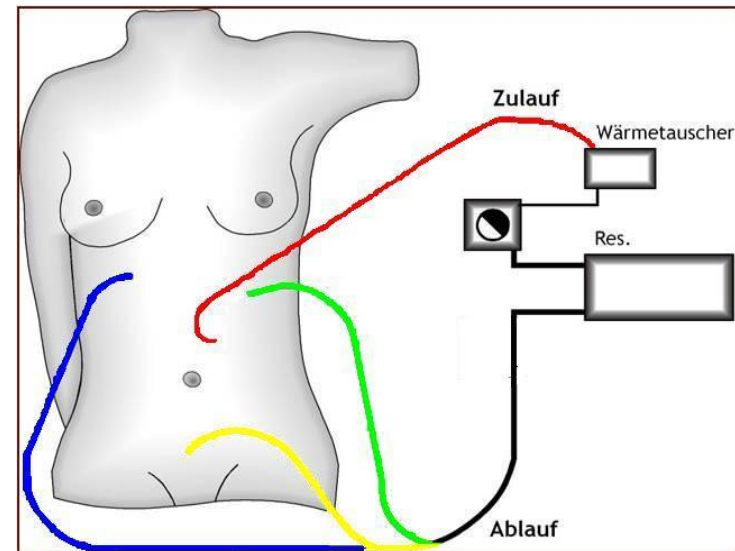
Cisplatin 80 mg/m² i.v. d1; **Capecitabin** 1000 mg/m² p.o. d1-14; **Trastuzumab** 3 cycl: 8-6-6 mg/kg i.v., d1

HIPEC:

Cisplatin 75 mg/m² i.p.; **Mitomycin** 15 mg/m² i.p.; 60 minutes, > 41° C

HIPEC

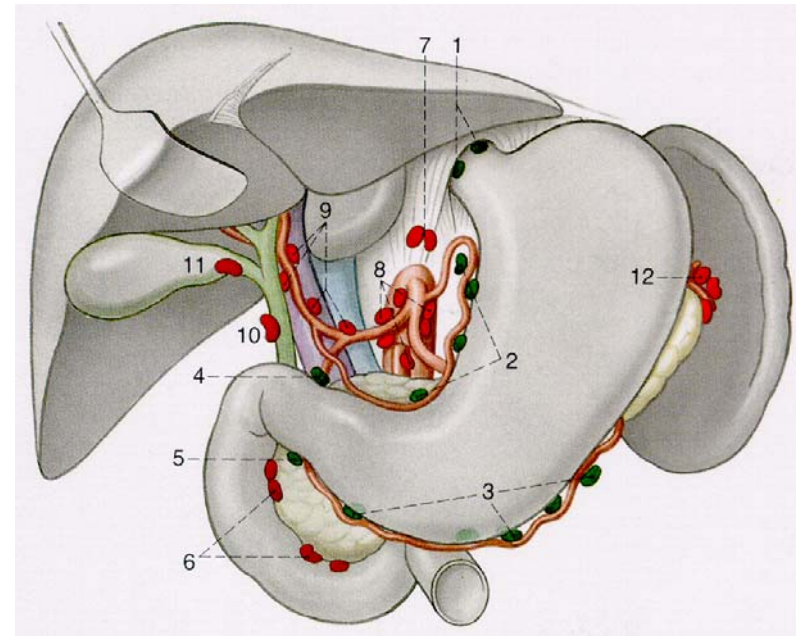
- HIPEC drugs
 - Cisplatin 139,5 mg
 - MMC 27,9 mg
 - Duration 60 minutes
 - Mean temperature 42 ° C



Guidelines Gastric Cancer

3.8.1. Surgery: Resection of the stomach

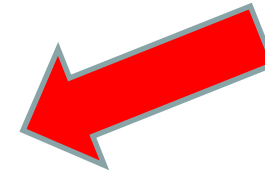
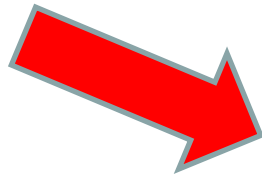
CRS and HIPEC in Gastric Cancer with
PSM is not recommended
unless in a clinical study



Moehler M, Z Gastroenterol 49:461 (2011)

Histological proven Gastric cancer or cardia cancer

STOPP
Bevor starting chemotherapy

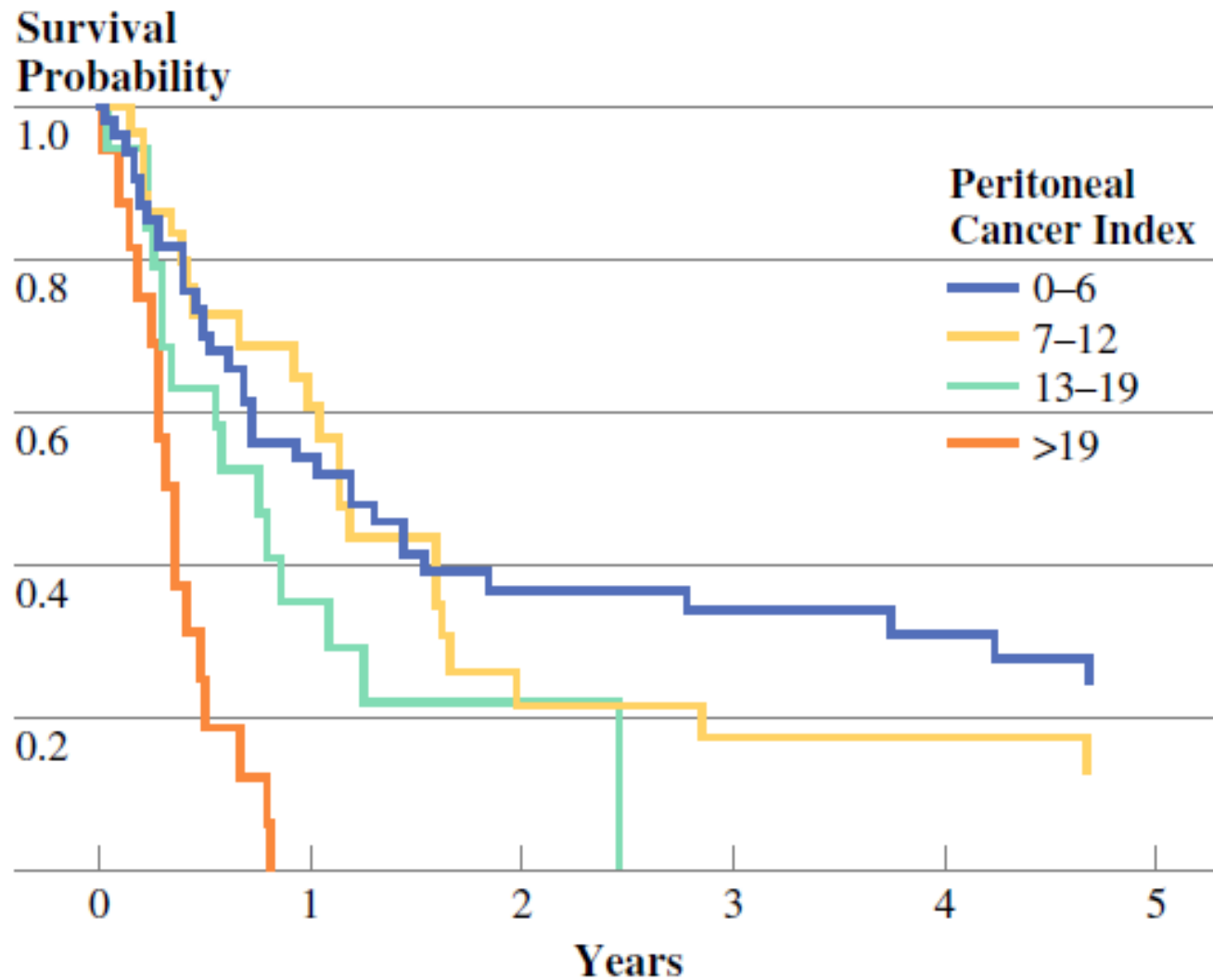


Staginglaparoscopy

Only patients with M1 (PER)
Can participate in the GASTRIPEC Trial

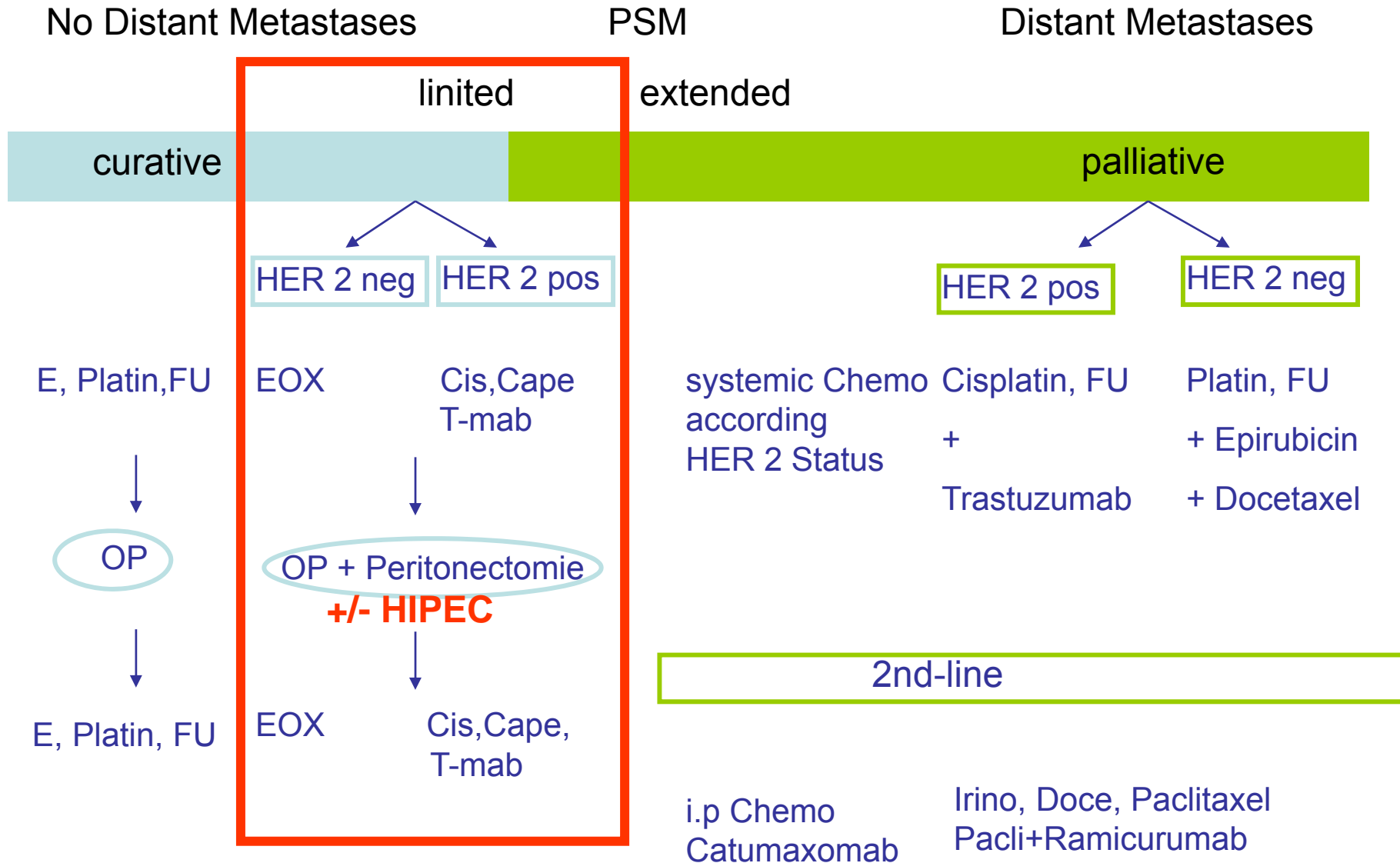
beate.rau@charite.de

Prognosis in Gastric Cancer: PCI n=159



Glehen O, Ann Surg Oncol 17:2370 (2010)

Gastric Cancer



GASTRIPEC Trial Gastric Cancer

	EudraCT-Number: 2006-006088-22 Phase III-Trial (prospektiv, randomisierte, zweiarmige, multizentrische Phase III-Studie im Parallelgruppendesign)
Investigator	Charité Campus Mitte
Indication	Peritoneal metastases in Gastric Cancer incl. AEG
Start	STUDY ongoing started 10.01.2014 (n = 19 / 180)
HIPEC	MMC 15 mg/m ² und CDDP 75 mg mg/m ² i.p.
1. Aim	Efficacy of HIPEC: Increasing OS
2. Aim	<ol style="list-style-type: none">1. 30 day morbidity after CRS \pm HIPEC2. Progression free survival3. Disease free survival4. QoL5. Toxicity6. Surgical interventions7. Hospital stay

Inclusion Criteria

- Gastric Cancer **incl. AEG and histologic proven Peritonealcarcinomatosis (inkl. Krukenberg Tumore)** without other DM
- Staging laparoscopy (explorative Laparotomy)
 - Peritoneal Cancer Index (PCI)
 - CCR ($\geq 80\%$)
- Age: ≥ 18 year and ≤ 75 year
- Karnofsky Index $\geq 70\%$
- Written informed consent

GASTRIPEC-TRIAL Surgery

Restaging: Exclusion of DM and progress

Surgery: Gastrectomy, and resection of lesion bearing peritoneum

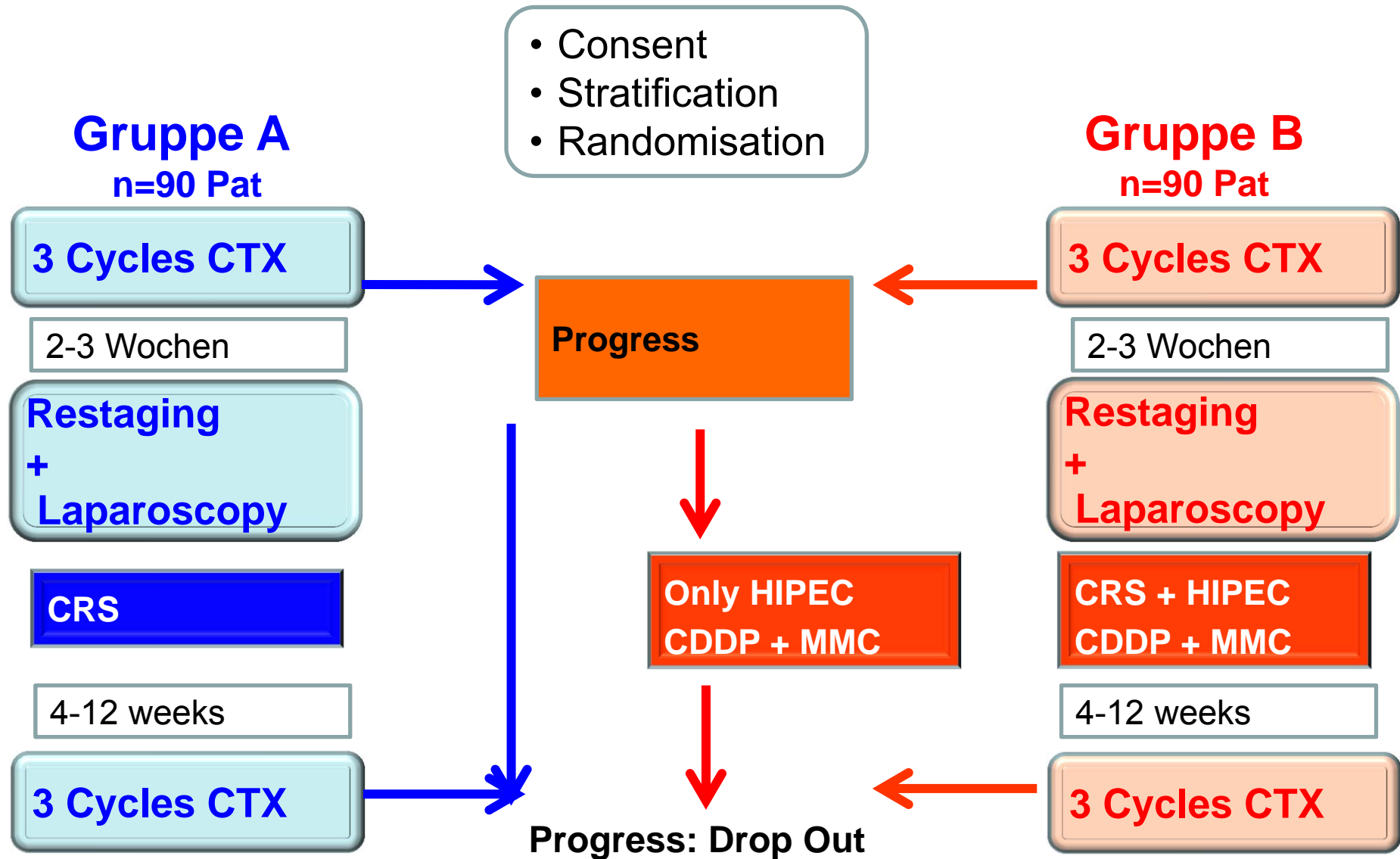
aiming **CCR 0/1** (< 0,25 cm)

HIPEC: synchronou or metachronous (5-7 d)

GASTRIPEC-TRIAL HIPEC

Duration:	60 minutes
Flow rate:	800 – 1000 ml / min
Temperature:	> 40 ° C
Chemotherapy:	CDDP 75 mg / m² MMC 15 mg / m²

GASTRIPEC Trial



Summary

- CSR and HIPEC in gastric cancer only with low PCI
- Screening in gastric cancer with laparoscopy is recommended
- Please treat the patient in trials, if available
- Still a lot of questions left